

# TIT COLLEGE, BHOPAL

## Appendix 8

### Format for Mandatory Disclosure

Mandatory Disclosure	updated on
1 AICTE File No.	06/01/MP/ENGG/2007/38
Date & Period of last approval	20 June' 2008
2 Name of the Institution	TIT COLLEGE
Address of the Institution	Infront of Hathaikheda Dam, Anand Nagar, Post Piplani, P.B. No-24, BHEL, Bhopal (M.P.) - 462021
	
	Location map of the Institution
City & Pin Code	Bhopal - 462021
State / UT	Madhya Pradesh
Phone number with STD code	0755-2800072
FAX number with STD code	0755-2751679
Office hours at the Institution	6.30 Hours
Academic hours at the Institution	6.30 Hours
Email	titcollege2008@gmail.com
Website	www.titbhopal.net
Nearest Railway Station(dist in Km)	8 Km
Nearest Airport (dist in Km)	25 Km
3 Type of Institution	Govt /Govt aided /University Dept /Deemed Univ / Private-Self Financed (√)
Category (1) of the Institution	Non Minority (√) / Minority specify minority :
Category (2) of the Institution	Co-Ed (√) / Women only

## TIT COLLEGE, BHOPAL

- 4 Name of the organization running the Institution Pawantanay Shiksha Samiti, Bhopal
- Type of the organization Society / Trust / PPP
- Address of the organization TIT College Campus, Anand Nagar, Post Piplani, B.H.E.L., Bhopal - 21
- Registration date 24.11.2006
- Website of the organization www.titbhopal.net
- 5 Name of the affiliating University^ Rajiv Gandhi Proudyogiki Vishwavidyalaya, Bhopal
- Address Airport Bypass Road, Gandhi Nagar, Bhopal - 462036
- Website rgtunet.net
- Latest affiliation period 2009-2010

**6 Name of Principal / Director Dr. Gulab Singh**

- Exact Designation Director
- Phone number with STD code 0755-2800072 (O), 9407276722 (R)
- FAX number with STD code 0755-2751679
- Email titcollege2008@gmail.com
- Highest Degree Ph.D.
- Field of specialization Computer Engineering

7 Governing Board Members (give details of all members with their educational qualification and other credentials)

1. Ms. SADHNA KARSOLIYA	CHAIRPERSON	M.A.	Educationist & Management Expert
2. Ms. Asha Mishra	Vice Chairperson	B.A.	Educationist & Technical Background
3. Ms. Surbhi Karsolia	Secretary	B.Tech	Technical Background
4. Ms. Triveni Chansoriya	Treasurer	B.A.	Educationist & Technical Background
4. Dr. Pramod Choubey	Member	Ph.D.	Prof. & Head Indian Institute of Public Administration, New Delhi Management Expert
5. Dr. N.D. Gargav	Member	M.S.	Ex. Prof. Gandhi Medical College. Educationist
6. Nominee of the Govt. of M.P.	Member		
7. Nominee of All India Council for Technical Education	Member		
8. Nominee of Rajiv Gandhi Pradyogiki Vishwavidyalaya	Member		
9. Director, TIT College, Bhopal	<b>Dr. Gulab Singh</b>	Ph.D.	

Frequency of meetings & date of last meeting

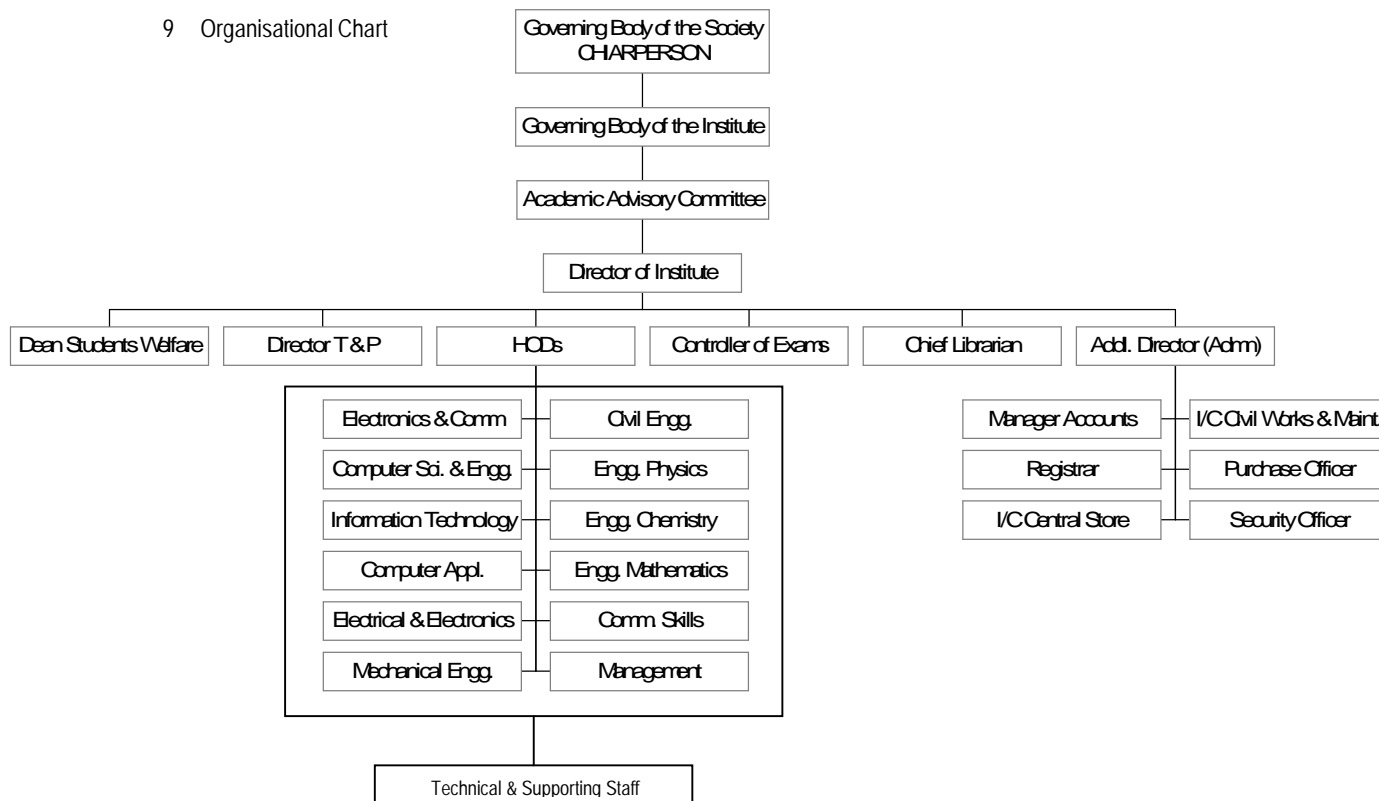
Twice in the year 10 Oct 2009

## TIT COLLEGE, BHOPAL

8 Academic Advisory Body

Frequency of meetings & date of last meeting                      Twice in the year  
 15 Jan 2010

9 Organisational Chart



10 Student feedback mechanism on Institutional Governance/faculty performance

*No. of Feedback Items in proforma* **11**

*No. of levels in the proforma* **4**

*Space for descriptive feedback/suggestion etc.* **Yes**

*Any consistency check* **Yes**

*Any performance/attendance profile* **Yes**

*Frequency of feedback collection :* **Twice in a semester, At middle and end of the semester**

*Feedback collection:* In the form of **Hard-copy**

*Feedback collection process:* **A faculty not connected with that particular class distributes the feedback form to all the students in the last hour. Every student gets 50 minutes to carefully fillup the form. These forms are then collected and submitted to Director.**

*Who collects the feedback:* **Faculty not teaching that particular course and semester**

*When feedback is collected:*

## TIT COLLEGE, BHOPAL

- 11 Grievance redressal mechanism for faculty, staff and students

**For Faculty & Staff:**

**The grievance cell was established and constituted with the following members to look into the representation submitted by both teaching and non teaching members.**

- 1) Dean Administration
- 2) Registrar
- 3) Respective HODs / Concerned Incharge

**The grievance Redressal cell meets as and when necessary.**

**For Students:**

**There is a grievance cell which consists of**

- **Dean (Student welfare)**
- **HOD of the respective disciplines**
- **Tutor Guardian (TG) of respective class.**

**Faculty is given the responsibility of a batch and designated as Tutor Guardian (TG). Their main objective is to find out assigned students academic, general and personal problems and give good suggestions and proper guidance, they also make necessary arrangement for remedial and makeup classes. In this way students can redress their problems and grievances with their respective HODs through their TG. Also provision has been made for the students to meet the respective TG and HODs fortnightly and once in a month the Director for their problems.**

**There is a complaint/suggestion Box at the entrance of the institute and helping desk at Director's office also to know the problems of the students. The Grievance cell meets once in a month to redress the grievance.**

- 12 Name of the Department\* **Electronics & Communication**

Course	BE		
Level	UG (✓) / PG		
1 <sup>st</sup> Year of approval by the Council	<b>06/01/MP/ENGG /2007/38, Date : 20.06.2008</b>		
Year wise Sanctioned Intake	2009-10	2008-09	2007-08
	60	60	Institute started in 2008-09
Year wise Actual Admissions	2009-10	2008-09	2007-08
	60	60	Institute started in 2008-09
Cut off marks – General quota	2009-10	2008-09	2007-08
	78.78-75.75	103.20-80.23	Institute started in 2008-09
% Students passed with Distinction	2009-10	2008-09	2007-08
	Institute started in 2008-09 (First batch yet to pass)		
% Students passed with First Class	2009-10	2008-09	2007-08
	Institute started in 2008-09 (First batch yet to pass)		
Students Placed	2009-10	2008-09	2007-08
	Institute started in 2008-09 (First batch yet to pass)		
Average Pay package, Rs./Year	2009-10	2008-09	2007-08
	Institute started in 2008-09 (First batch yet to pass)		
Students opted for Higher Studies	2009-10	2008-09	2007-08
	Institute started in 2008-09 (First batch yet to pass)		
Accreditation Status of the course	Accredited / Provisionally Accredited / Not Accredited / Not eligible yet(✓)		
Doctoral Courses	Yes / No(✓) Not eligible yet		
Foreign Collaborations, if any	No(✓)		
Professional Society Memberships	No(✓)		
Professional activities	Nil		
Consultancy activities	Nil		
Grants fetched	Nil		
Departmental Achievements	--		
Distinguished Alumni	Institute started in 2008-09 (First batch yet to pass)		

## TIT COLLEGE, BHOPAL

12	Name of the Department*	<b>Computer Science &amp; Engineering</b>		
	Course	BE		
	Level	UG (✓) / PG		
	1 <sup>st</sup> Year of approval by the Council	<b>06/01/MP/ENGG /2007/38, Date : 20.06.2008</b>		
	Year wise Sanctioned Intake	2009-10	2008-09	2007-08
		120	60	Institute started in 2008-09
	Year wise Actual Admissions	2009-10	2008-09	2007-08
		116	60	Institute started in 2008-09
	Cut off marks – General quota	2009-10	2008-09	2007-08
		65.65-51.40	95.01-74.72	Institute started in 2008-09
	% Students passed with Distinction	2009-10	2008-09	2007-08
		Institute started in 2008-09		
	% Students passed with First Class	2009-10	2008-09	2007-08
		Institute started in 2008-09 (First batch yet to pass)		
	Students Placed	2009-10	2008-09	2007-08
		Institute started in 2008-09		
	Average Pay package, Rs./Year	2009-10	2008-09	2007-08
		Institute started in 2008-09		
	Students opted for Higher Studies	2009-10	2008-09	2007-08
		Institute started in 2008-09		
	Accreditation Status of the course	Accredited / Provisionally Accredited / Not Accredited / Not eligible yet(✓)		
	Doctoral Courses	Yes / No(✓) Not eligible yet		
	Foreign Collaborations, if any	No (✓)		
	Professional Society Memberships	No (✓)		
	Professional activities	Nil		
	Consultancy activities	Nil		
	Grants fetched	Nil		
	Departmental Achievements	--		
	Distinguished Alumni	Institute started in 2008-09		
12	Name of the Department*	<b>Information Technology</b>		
	Course	BE		
	Level	UG (✓) / PG		
	1 <sup>st</sup> Year of approval by the Council	<b>06/01/MP/ENGG /2007/38, Date : 20.06.2008</b>		
	Year wise Sanctioned Intake	2009-10	2008-09	2007-08
		60	60	Institute started in 2008-09
	Year wise Actual Admissions	2009-10	2008-09	2007-08
		12	59	Institute started in 2008-09
	Cut off marks – General quota	2009-10	2008-09	2007-08
		60.60-50.60	74.64-57.71	Institute started in 2008-09
	% Students passed with Distinction	2009-10	2008-09	2007-08
		Institute started in 2008-09		
	% Students passed with First Class	2009-10	2008-09	2007-08
		Institute started in 2008-09 (First batch yet to pass)		
	Students Placed	2009-10	2008-09	2007-08
		Institute started in 2008-09		
	Average Pay package, Rs./Year	2009-10	2008-09	2007-08
		Institute started in 2008-09		
	Students opted for Higher Studies	2009-10	2008-09	2007-08
		Institute started in 2008-09		
	Accreditation Status of the course	Accredited / Provisionally Accredited / Not Accredited / Not eligible yet(✓)		
	Doctoral Courses	Yes / No(✓) Not eligible yet		
	Foreign Collaborations, if any	No (✓)		
	Professional Society Memberships	No (✓)		
	Professional activities	Nil		
	Consultancy activities	Nil		
	Grants fetched	Nil		
	Departmental Achievements	--		
	Distinguished Alumni	Institute started in 2008-09		

## TIT COLLEGE, BHOPAL

12	Name of the Department*	<b>Mechanical Engineering</b>		
	Course	BE		
	Level	UG (✓) / PG		
	1 <sup>st</sup> Year of approval by the Council	<b>06/01/MP/ENGG /2007/38, Date : 20.06.2008</b>		
	Year wise Sanctioned Intake	2009-10	2008-09	2007-08
		60	60	Institute started in 2008-09
	Year wise Actual Admissions	2009-10	2008-09	2007-08
		60	60	Institute started in 2008-09
	Cut off marks – General quota	2009-10	2008-09	2007-08
		89.89-62.62	84.37-76.36	Institute started in 2008-09
	% Students passed with Distinction	2009-10	2008-09	2007-08
		Institute started in 2008-09		
	% Students passed with First Class	2009-10	2008-09	2007-08
		Institute started in 2008-09 (First batch yet to pass)		
	Students Placed	2009-10	2008-09	2007-08
		Institute started in 2008-09		
	Average Pay package, Rs./Year	2009-10	2008-09	2007-08
		Institute started in 2008-09		
	Students opted for Higher Studies	2009-10	2008-09	2007-08
		Institute started in 2008-09		
	Accreditation Status of the course	Accredited / Provisionally Accredited / Not Accredited / Not eligible yet(✓)		
	Doctoral Courses	Yes / No(✓) Not eligible yet		
	Foreign Collaborations, if any	No (✓)		
	Professional Society Memberships	No (✓)		
	Professional activities	Nil		
	Consultancy activities	Nil		
	Grants fetched	Nil		
	Departmental Achievements	--		
	Distinguished Alumni	Institute started in 2008-09		
12	Name of the Department*	<b>Master of Computer Application</b>		
	Course	MCA		
	Level	UG / PG (✓)		
	1 <sup>st</sup> Year of approval by the Council	<b>06/01/MP/ENGG /2007/38, Date : 20.06.2008</b>		
	Year wise Sanctioned Intake	2009-10	2008-09	2007-08
		60	MCA started in 2009-10	
	Year wise Actual Admissions	2009-10	2008-09	2007-08
		14	MCA started in 2009-10	
	Cut off marks – General quota	2009-10	2008-09	2007-08
		110.2-61.22	MCA started in 2009-10	
	% Students passed with Distinction	2009-10	2008-09	2007-08
		Institute started in 2008-09		
	% Students passed with First Class	2009-10	2008-09	2007-08
		MCA started in 2009-10 (First batch yet to pass)		
	Students Placed	2009-10	2008-09	2007-08
		MCA started in 2009-10		
	Average Pay package, Rs./Year	2009-10	2008-09	2007-08
		MCA started in 2009-10		
	Students opted for Higher Studies	2009-10	2008-09	2007-08
		MCA started in 2009-1009		
	Accreditation Status of the course	Accredited / Provisionally Accredited / Not Accredited / Not eligible yet(✓)		
	Doctoral Courses	Yes / No(✓) Not eligible yet		
	Foreign Collaborations, if any	No (✓)		
	Professional Society Memberships	No (✓)		
	Professional activities	Nil		
	Consultancy activities	Nil		
	Grants fetched	Nil		
	Departmental Achievements	--		
	Distinguished Alumni	Institute started in 2008-09 (MCA started in 2009-10)		

## TIT COLLEGE, BHOPAL

### 13. FACULTY PROFILES OF ALL FACULTY INCLUDING HEAD OF THE INSTITUTE IS ATTACHED IN THEIR INDIVIDUAL FOLDERS IN FACULTY TAB

13 Name of Teaching Staff\*

Designation

Department

Date of Joining the Institution

Qualifications with Class/Grade

UG

PG

Ph.D.

Total Experience in Years

Teaching

Industry

Research

Papers Published

National

International

PhD Guide? Give field & University

Field

University

PhDs / Projects Guided

PhDs

Projects at Masters level

Books Published / IPRs/ Patents

Professional Memberships

Consultancy Activities

Awards

Grants fetched

Interaction with Professional Institutions



14 Admission quota#

Electronics & Communication

Entrance test / admission criteria

PEPT Entrance Test (Conducted by VYAPAM, Bhopal)

Cut off / last candidate admitted

2009-2010

2008-2009

2007-2008

52.52

47.53

(Course Started in 2008-09)

Fees in rupees

2009-2010

2008-2009

2007-2008

64050

44740

(Course Started in 2008-09)

Number of Fee Waivers offered

2009-2010

2008-2009

2007-2008

NA

Total 02

NA

Admission Calendar

As per the University calendar (RGPV, Bhopal)

PIO quota

Yes / No( )

14 Admission quota#

Computer Science & Engg.

Entrance test / admission criteria

PEPT Entrance Test (Conducted by VYAPAM, Bhopal)

Cut off / last candidate admitted

2009-2010

2008-2009

2007-2008

44.44

53.5

(Course Started in 2008-09)

Fees in rupees

2009-2010

2008-2009

2007-2008

64050

44740

(Course Started in 2008-09)

Number of Fee Waivers offered

2009-2010

2008-2009

2007-2008

NA

Total 02

NA

Admission Calendar

As per the University calendar (RGPV, Bhopal)

PIO quota

Yes / No( )

## TIT COLLEGE, BHOPAL

14 Admission quota#	Information Technology		
Entrance test / admission criteria	PEPT Entrance Test (Conducted by VYAPAM, Bhopal)		
Cut off / last candidate admitted	2009-2010	2008-2009	2007-2008
	32.00	37.92	(Course Started in 2008-09)
Fees in rupees	2009-2010	2008-2009	2007-2008
	64050	44740	(Course Started in 2008-09)
Number of Fee Waivers offered	2009-2010	2008-2009	2007-2008
	NA	Total 02	NA
Admission Calendar	As per the University calendar (RGPV, Bhopal)		
PIO quota	Yes / No( )		

14 Admission quota#	Mechanical Engg.		
Entrance test / admission criteria	PEPT Entrance Test (Conducted by VYAPAM, Bhopal)		
Cut off / last candidate admitted	2009-2010	2008-2009	2007-2008
	50.50	43.36	(Course Started in 2008-09)
Fees in rupees	2009-2010	2008-2009	2007-2008
	64050	44740	(Course Started in 2008-09)
Number of Fee Waivers offered	2009-2010	2008-2009	2007-2008
	NA	Total 02	NA
Admission Calendar	As per the University calendar (RGPV, Bhopal)		
PIO quota	Yes / No( )		

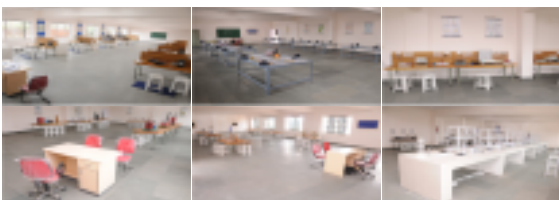
14 Admission quota#	MCA		
Entrance test / admission criteria	(Pre-MCA) (Conducted by VYAPAM, Govt. of M.P., Bhopal)		
Cut off / last candidate admitted	2009-2010	2008-2009	2007-2008
	61.22%	(MCA Started in 2009-10)	
Fees in rupees	2009-2010	2008-2009	2007-2008
	64050	(MCA Started in 2009-10)	
Number of Fee Waivers offered	2009-2010	2008-2009	2007-2008
	NA	NA	NA
Admission Calendar	As per the University calendar (BU, Bhopal)		
PIO quota	Yes / No( )		

### 15 Infrastructural information^

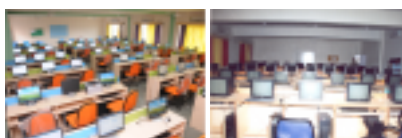
Classroom/Tutorial Room facilities



Laboratory details



Computer Centre facilities



# TIT COLLEGE, BHOPAL

Library facilities



Auditorium / Seminar Halls / Amphi



Cafeteria



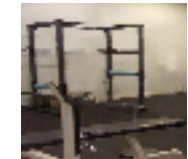
Indoor Sports facilities



Outdoor Sports facilities



Gymnasium facilities



Facilities for disabled



Any other facilities



16 Boys Hostel



Girls Hostel



Medical & other Facilities at Hostel



## TIT COLLEGE, BHOPAL

### 17 Academic Session

Examination system, Year / Sem	Semester (2 semester per year)
Period of declaration of results	Results are declared by University

### 18 Counseling / Mentoring

Career Counseling	Career Guidance Cell in place
Medical facilities	Medical dispensary with 02 bed along with essential facilities is managed by qualified medical practitioners.
Student Insurance	All the students are insured under group insurance by RGPV

### 19 Students Activity Body

Cultural activities	conducted by students collectively
Sports activities	conducted by students collectively
Literary activities	conducted by students collectively
Magazine / Newsletter	Techno NEWS newsletter published in house
Technical activities / Tech Fest	conducted on regular basis
Industrial Visits / Tours	conducted on regular basis
Alumni activities	registered alumni association with own website is in place

### 20 Name of the Information Officer for

RTI	Prof. Rashmi Gupta
Designation	Professor
Phone number with STD code	0755-2751749
FAX number with STD code	0755-2751679
Email	titcbhopal2008@gmail.com

CAY=Current Academic Year

\* Repeat this template for each department / staff.

# Repeat this template for additional quota, if any.

^ Add photographs